

Hiroshima: Ground Zero 1945 • May 20–August 28, 2011

Contact the ICP Communications department at 212.857.0045 or info@icp.org to receive high resolution images and caption information.

1



United States Strategic Bombing Survey, Physical Damage Division
[Distorted steel-frame structure of Odamasa Store, Hiroshima], November 20, 1945
Gelatin silver print
International Center of Photography

2



United States Strategic Bombing Survey, Physical Damage Division
[Cemetery with debris, on the grounds of Kokutai Temple, showing sacred camphor tree charred by blast and Bank of Japan in background, Hiroshima], November 5, 1945
Gelatin silver contact print
International Center of Photography

3



United States Strategic Bombing Survey, Physical Damage Division
[Ruins of the Hiroshima Prefectural Commercial Exhibition Hall (A-Bomb Dome)], October 24, 1945
Gelatin silver print
International Center of Photography

4



United States Strategic Bombing Survey, Physical Damage Division
["Shadow" of a hand valve wheel on the painted wall of a gas storage tank; radiant heat instantly burned paint where the heat rays were not obstructed, Hiroshima], October 14–November 26, 1945
Gelatin silver print
International Center of Photography

5



United States Strategic Bombing Survey, Physical Damage Division
[Charred boy's jacket found near Hiroshima City Hall], November 5, 1945
Gelatin silver contact print
International Center of Photography

6



United States Strategic Bombing Survey, Physical Damage Division
[Remains of a school building], November 17, 1945
Gelatin silver contact print
International Center of Photography

Hiroshima: Ground Zero 1945 • May 20–August 28, 2011

Contact the ICP Communications department at 212.857.0045 or info@icp.org to receive high resolution images and caption information

7



United States Strategic Bombing Survey, Physical Damage Division
[Ruins of Chugoku Coal Distribution Company or Hiroshima Gas Company],
November 8, 1945
Gelatin silver contact print
International Center of Photography

8



United States Strategic Bombing Survey, Physical Damage Division
[Interior of Hiroshima City Hall auditorium with undamaged walls and framing
but spalling of plaster and complete destruction of contents by fire],
November 1, 1945
Gelatin silver print
International Center of Photography

9



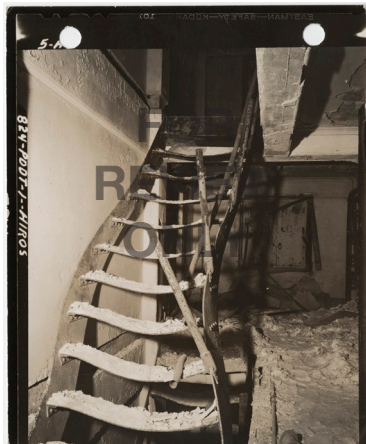
United States Strategic Bombing Survey, Physical Damage Division
[Buckle of north wall of wing number one of Funairi Grammar School, Hiroshima],
November 20, 1945
Gelatin silver print
International Center of Photography

10



United States Strategic Bombing Survey, Physical Damage Division
[Rooftop view of atomic destruction, looking southwest, Hiroshima],
October 31, 1945
Gelatin silver print
International Center of Photography

11



United States Strategic Bombing Survey, Physical Damage Division
[Steel stairs warped by intense heat from burned book stacks of Asano Library,
Hiroshima],
November 15, 1945
Gelatin silver contact print
International Center of Photography

12



United States Strategic Bombing Survey, Physical Damage Division
[Complete destruction of wooden floor and telephone switch and relay racks of
Hiroshima Telephone Company, Central District Exchange], October 28, 1945
Gelatin silver print
International Center of Photography